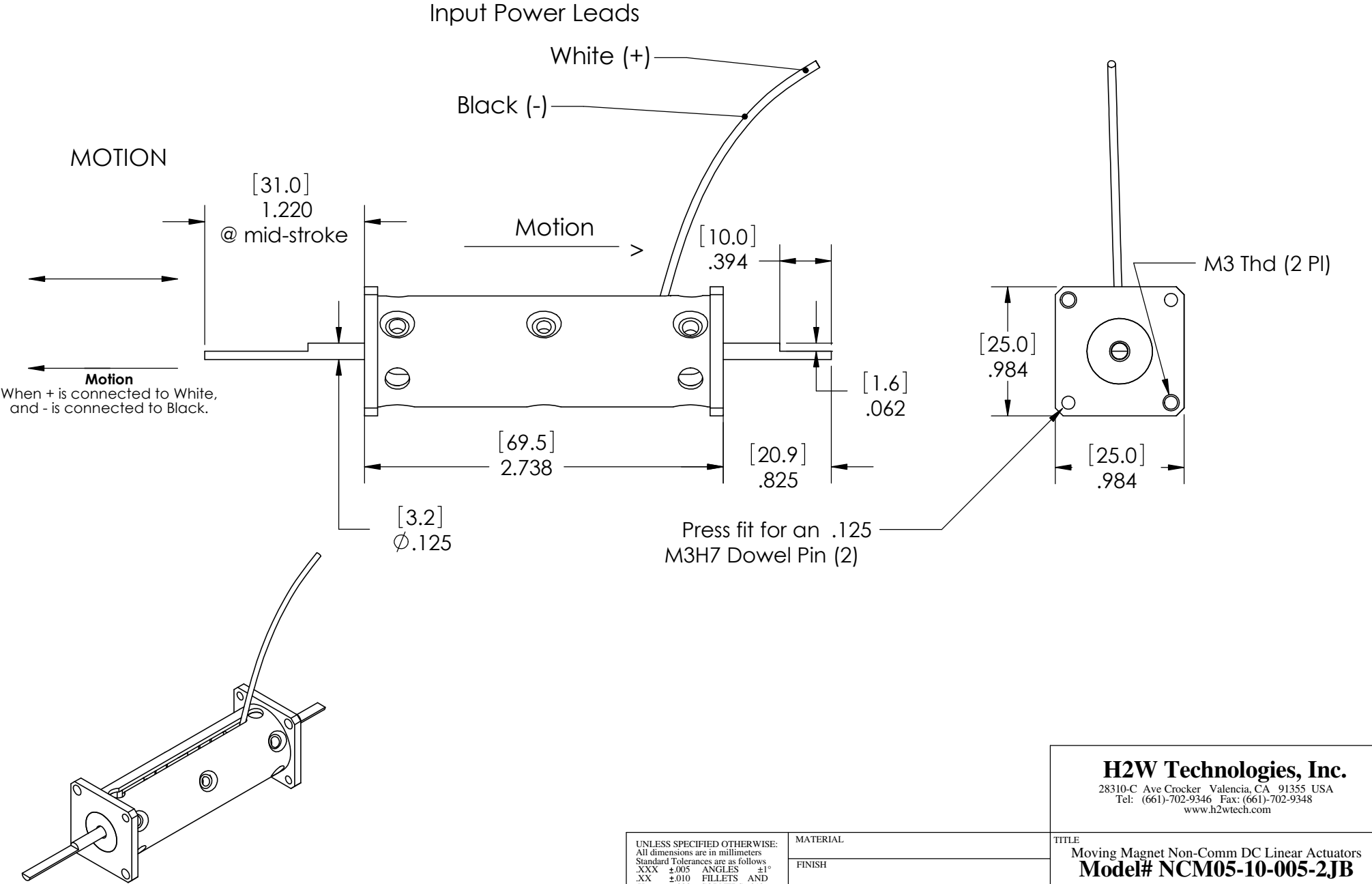


These drawings and specifications are the property of H2W Technologies, Inc. They are issued in confidence and shall not be reproduced, copied, or used without written permission from H2W Technologies, Inc.



H2W Technologies, Inc.

28310-C Ave Crocker Valencia, CA 91355 USA
Tel: (661)-702-9346 Fax: (661)-702-9348
www.h2wtech.com

TITLE
Moving Magnet Non-Comm DC Linear Actuators
Model# NCM05-10-005-2JB

UNLESS SPECIFIED OTHERWISE:
All dimensions are in millimeters
Standard Tolerances are as follows
.XXX ±.005 ANGLES ±1°
.XX ±.010 FILLETS AND
X ±.020 CORNERS .010
Remove All Burrs and Sharp Edges

MATERIAL			
FINISH			
DRAWN MPW	DATE 3-14-02	APPROVED FGW	DATE 3-14-02

DWG #	REV	ECN
30-0098	B	

MOVING MAGNET NON-COMM ACTUATOR SPECIFICATIONS		
Motor P/N	NCM05-10-005-2JB	
Stroke	0.50"	12.7 mm
Radial Clearance	N/A in	N/A mm
Bearing Type	Jeweled Sapphire	
Moving Mass	0.04 lbs	20 grams
Total Mass	0.48 lbs	220 grams
Resistance @ 20C	5.2 ohms	
Inductance @ 20C	0.60 mH	
Electrical Time Constant	0.12 msec	
Motor Constant	0.22 LBS/SQRT(Watt)	1.02 N/SQRT(Watt)
Force Constant	0.51 LBS/Amp	2.3 N/Amp
Back EMF	0.06 V/ips	2.3 V/m/sec
Continuous Force	0.50 LBS	2.2 N
Max Power @ 100% Duty	5 Watts	
Peak Force	1.50 LBS	6.7 N
Max Power @ 10% Duty	47 Watts	